

## Corrections to Adopted Local Plan, April 2004

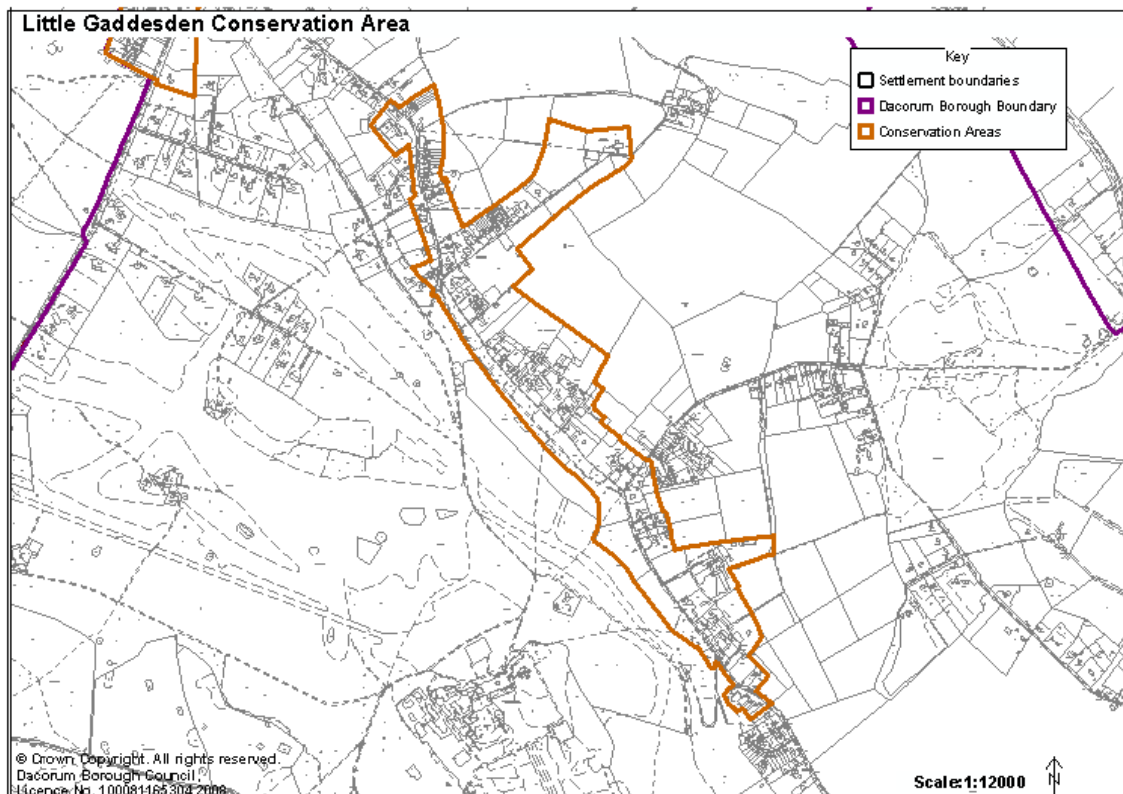
### Conservation Area Changes

#### 1. The boundary of Little Gaddesden Conservation Area.

This should be extended southwards to include Little Gaddesden House and other property.

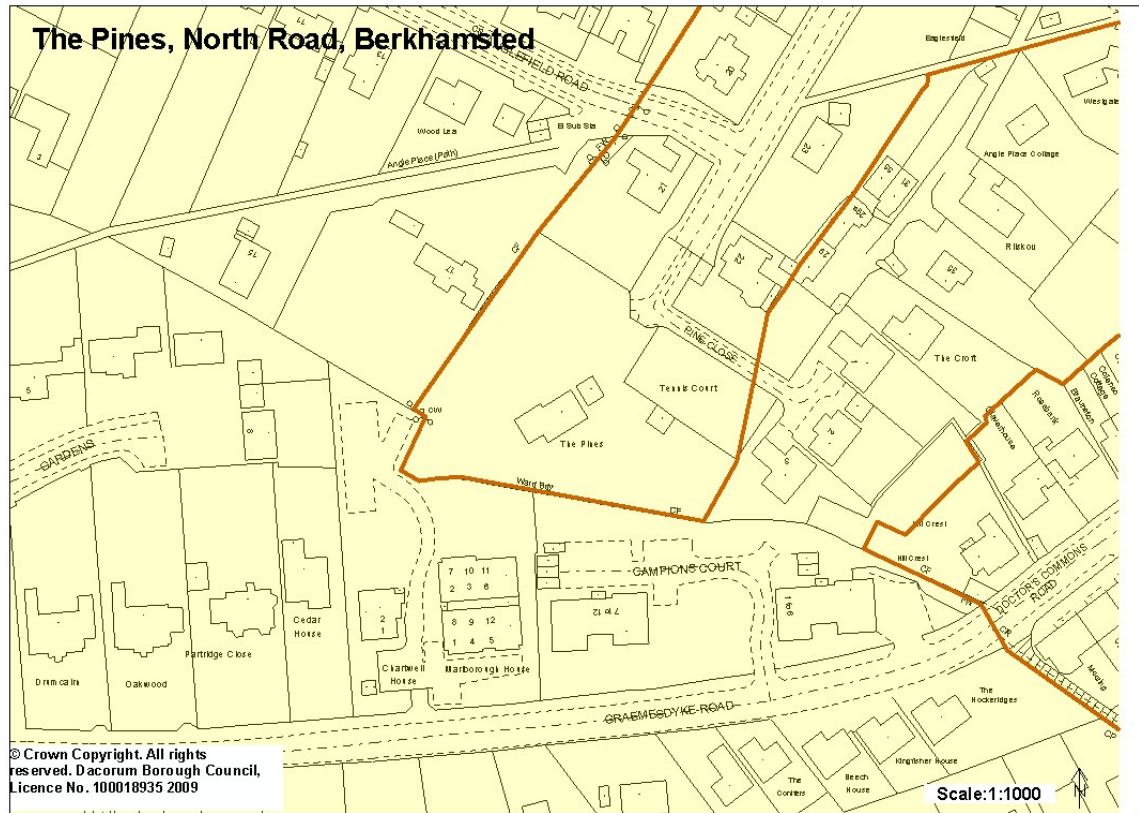
Please note that the above error has come to light in checking old documentation. The designation of conservation area boundaries follows separate regulations to the Local Plan and cannot be amended by the Local Plan. The corrected boundary follows the line approved in the original conservation area designation made by the County Council. The boundary of Little Gaddesden and other conservation areas is generally being reviewed in accordance with the Council's conservation strategy: the project is recorded in the approved Local Development Scheme. A boundary review does not necessarily imply a change of boundary. The project will lead to more detailed policies for the protection of conservation areas. Drafts of these policy statements will be published for consultation in due course. For any further information please contact the Council's Principal of Conservation and Design.

Correct boundary shown below:

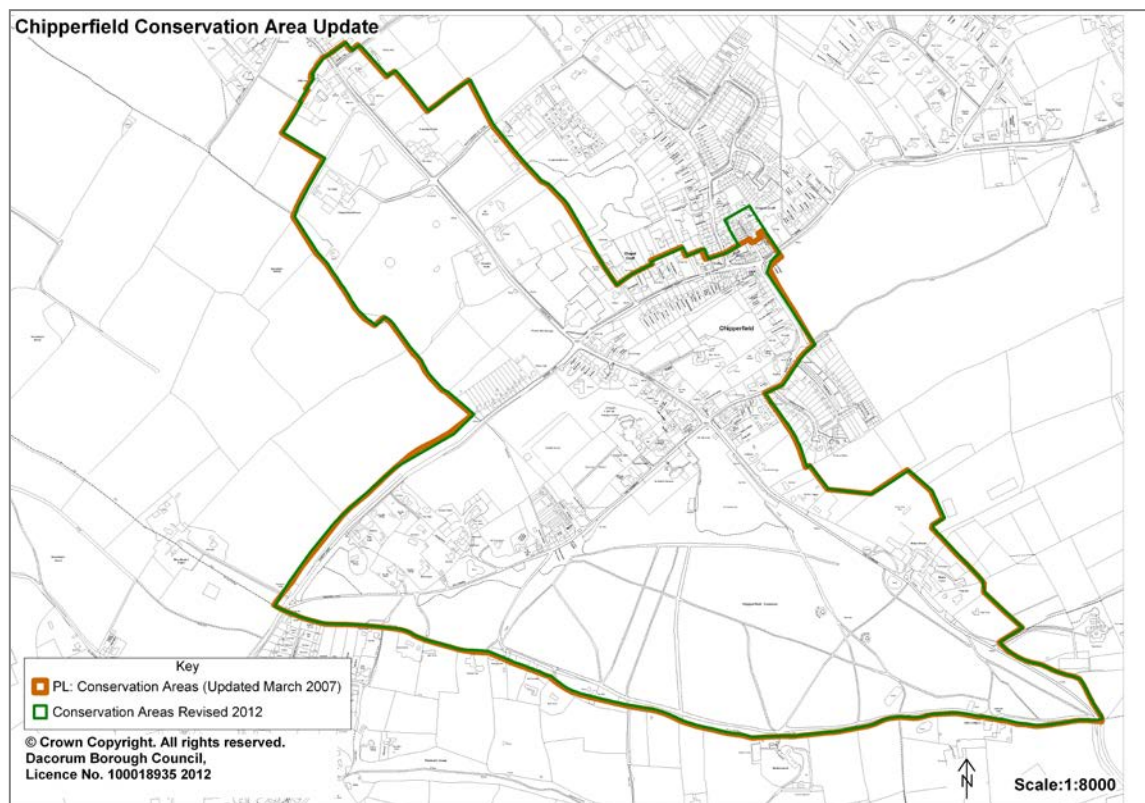


## 2. Conservation Area for The Pines, North Road, Berkhamsted

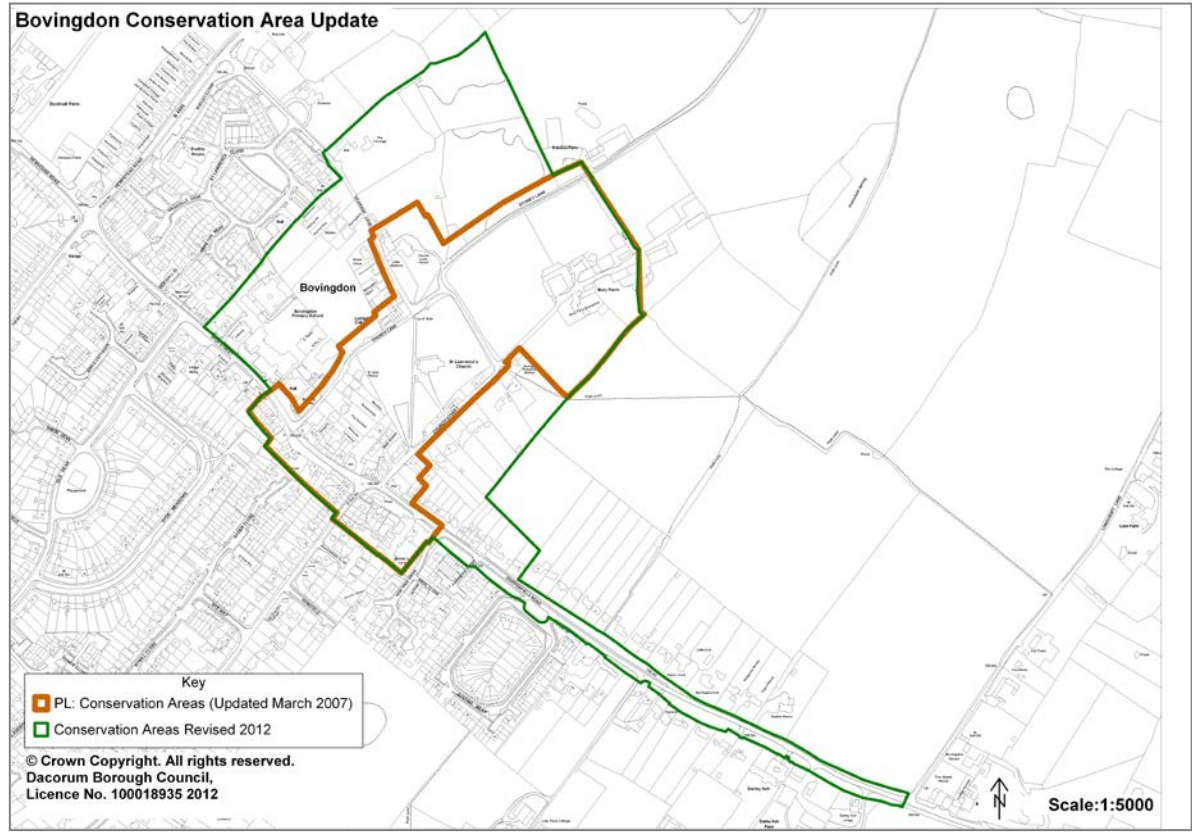
This boundary was extended beyond the tennis courts to include The Pines up to the ward boundary.



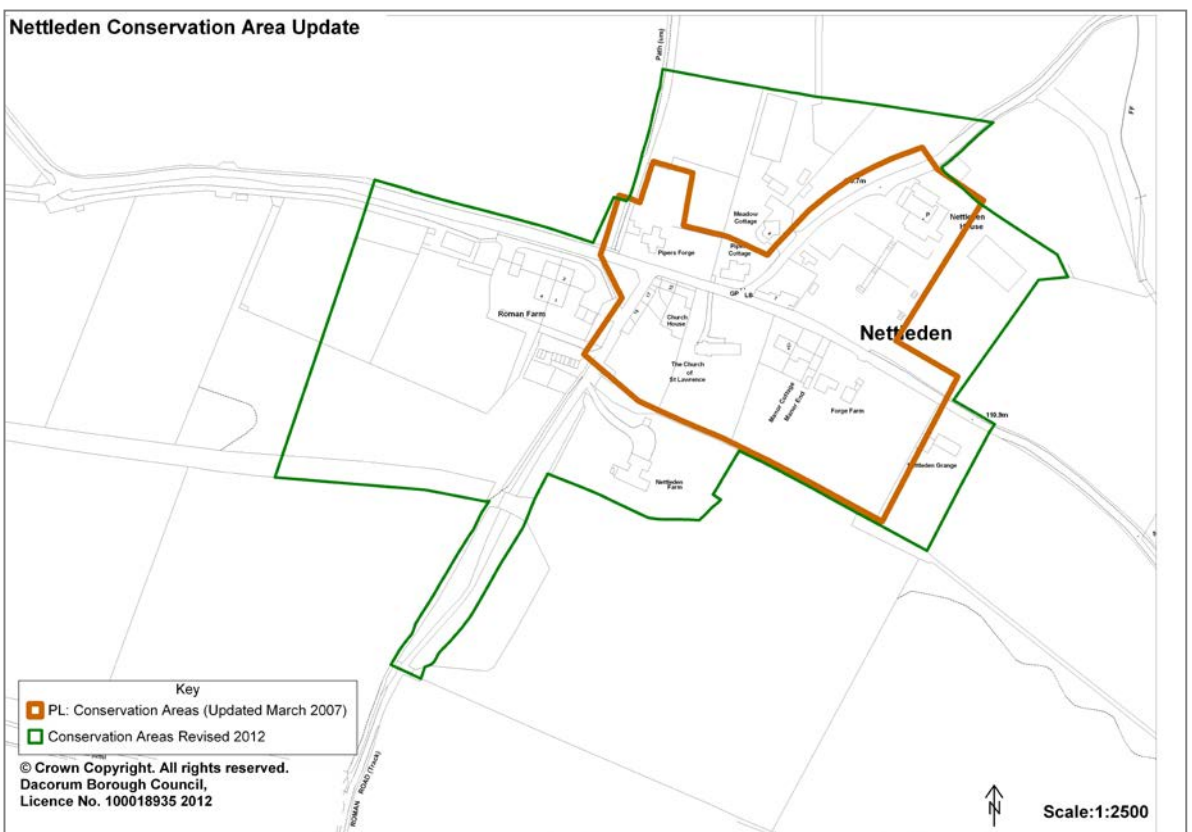
## 3. Chipperfield Conservation Areas Update 2012



#### 4. Bovington Conservation Area Update 2012

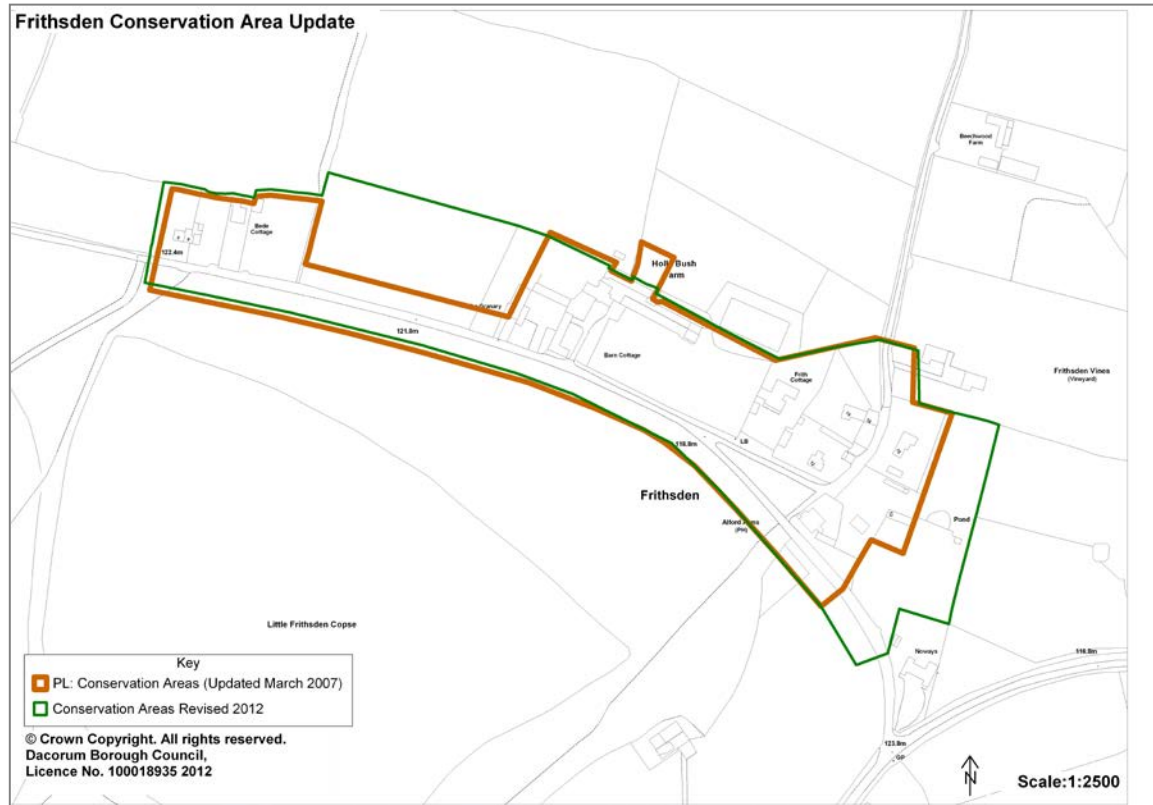


#### 5. Nettleden Conservation Area Update 2012

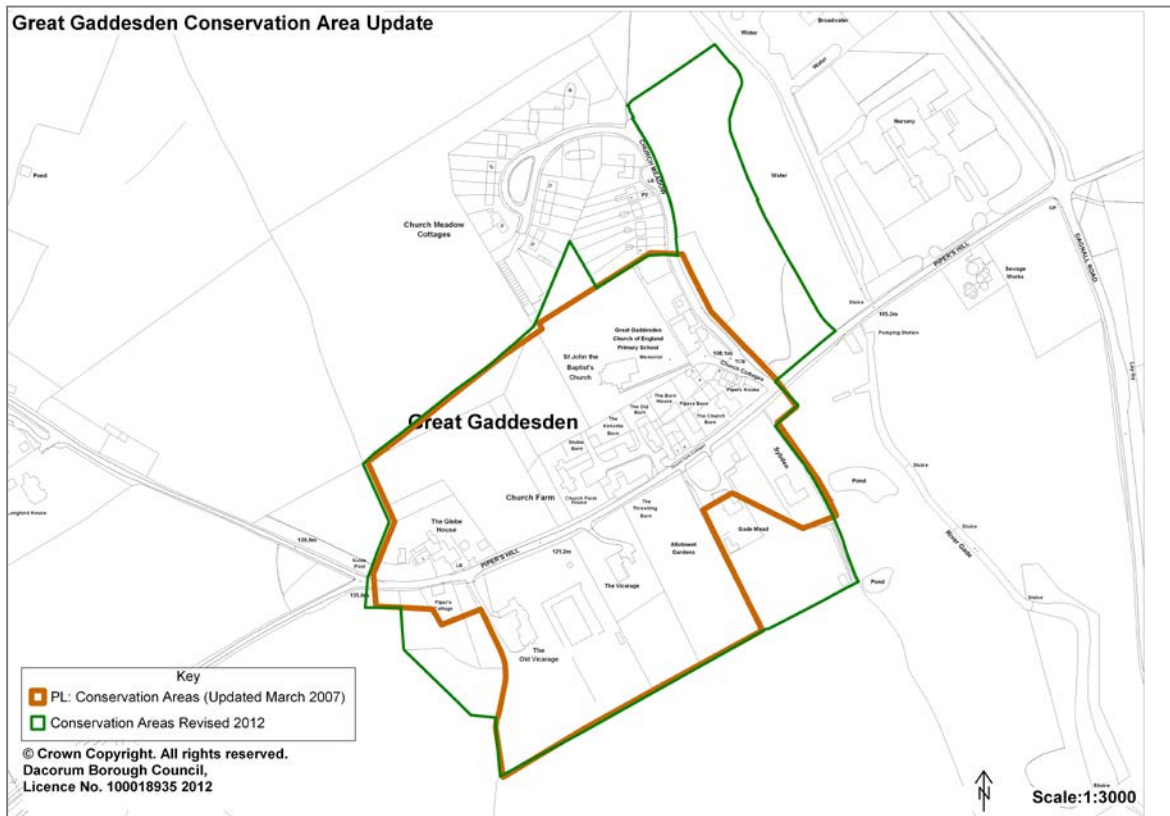




## 6. Frithsden Conservation Area Update 2012



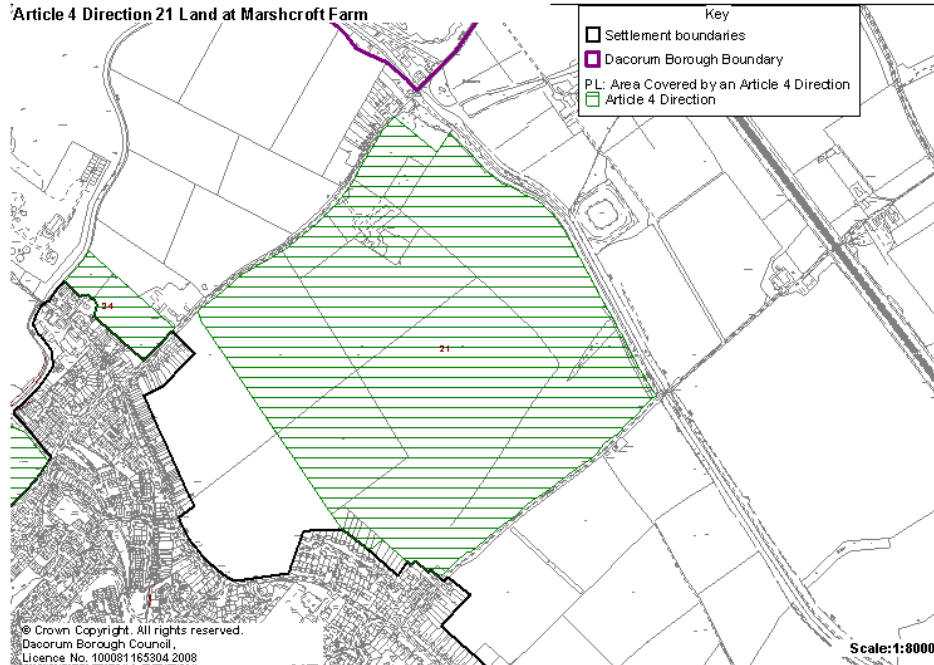
## 7. Great Gaddesden Conservation Area Update 2012



**8. Article 4 Direction, Land at Marshcroft Farm, Bulbourne Road, Tring.**

The northern corner of this site is not affected by the Article 4 direction.

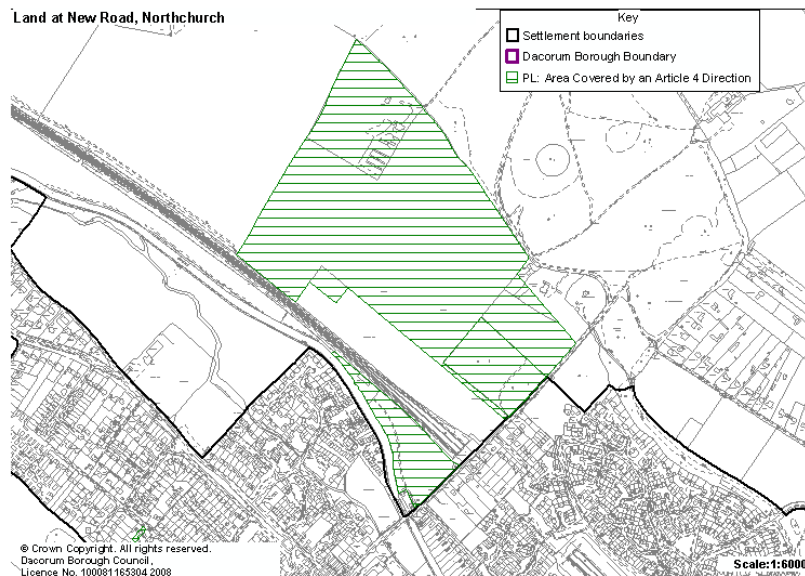
Correct boundary shown below:



**9. Article 4 Direction, Land at New Road, Northchurch.**

Article 4 Direction 6, land south of the railway line and north of the canal is also covered by this direction, but has not been plotted on the Proposals Map.

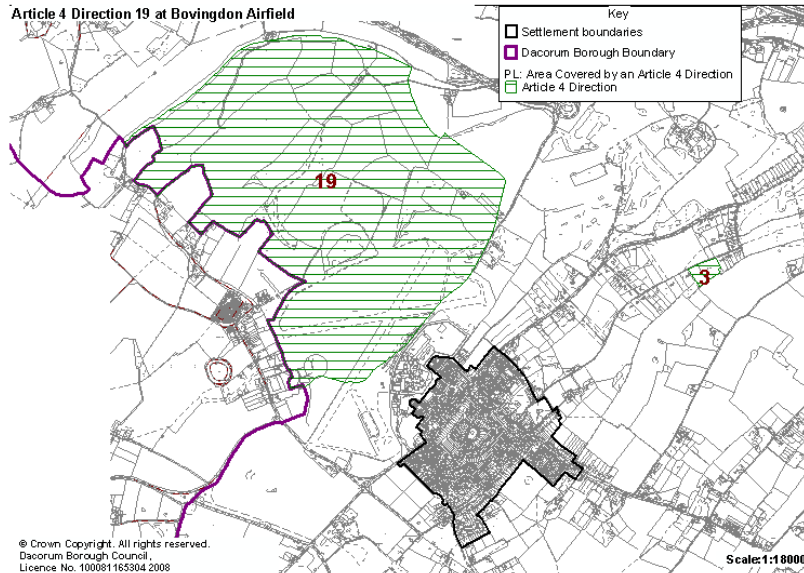
Correct boundary shown below:



## 10. Article 4 Direction, Bovingdon Airfield.

Mis-numbered as 1, and should be Article 4 Direction 19.

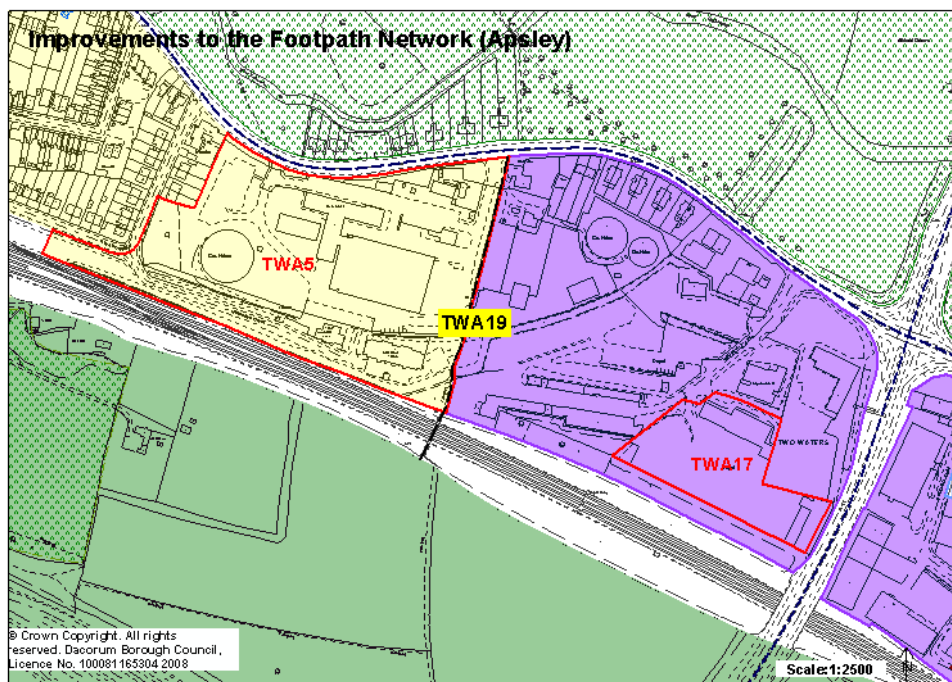
Correct label shown below:



## 11. Proposals Map - Map 6

TWA21 the Gas Board site, designation should be TWA19 (improvements to the footpath network).

Correct label shown below:





## 12. Parks and Gardens of Special Historic Interest: New designation at Hemel Water Gardens 01 Feb 2010

Site reference number: 5346

### Water Gardens Hemel Hempstead



**13. Appendix 6 – Open Space and Play Provision**

A6.3 states the minimum level of open space provision for the Borough as a whole is assessed on the basis of 2.8ha. The figure in brackets should state 6.4 acres not 17.